

Turntable TT 1.5 WI

Technical data:

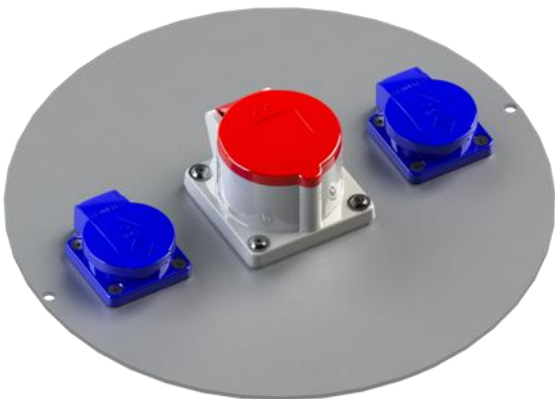
Diameter	1.5 m
Load capability	500 kg
Point Load	125kg (at area of 10 cm x 10 cm)
Height	
up to ferrite cover	118 mm
total	166 mm
Material cover plate	Laminated wood
Rotating speed adjustable	0.1 rpm – 2.5 rpm
Positioning accuracy	+/- 0.5°
Rotating angle	-200° to 400°
Motor	Synchronous servo motor
Turntable drive	Toothed belt and worm gear
Elevation tolerance	< 3 mm
Voltage	110 VAC – 230 VAC; 50 Hz / 60 Hz; single phase
Current consumption	max. 16 A
Required RCD	300 mA
Control cable	Fiber optic lines
Remote control via	LAN (TCP/IP); (IEEE only with NCD)
Interference suppression	20 dB under limits DIN EN 55011:2022-05 class B
Temperature working range	10°C – 35°C
Total weight	approx. 170 kg
Accessories	Service manual 3 m power supply cable

Brief description

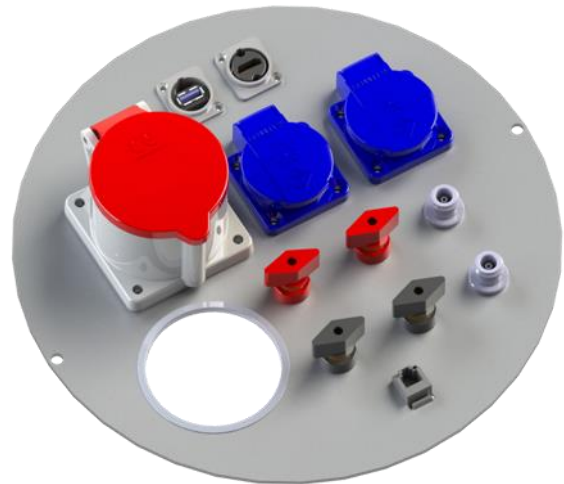
The turntable **TT 1.5 WI** is especially for installation in fully anechoic electromagnetic absorption chambers. The carrier plate is made of waterproof, laminated and lacquered wood. There is a division plate between the wooden plates, which can be covered with ferrite tiles in order that there are no metal parts above the ground plane.

A 285 mm diameter opening in the center of the turntable provides the capability to insert power supply for testing.

The **LAN (TCP/IP) - interface** provides an additional control option for all functions, when operated with the **FCU^{3.0}** or **NCD Controller**



Standard center plate



Example for a customized center plate

Information presented enclosed is subject to change as product enhancements are made regularly. Pictures included are for illustration purposes only and do not represent all possible configurations.