

Turntable TT 2.0 SI

Technical data:

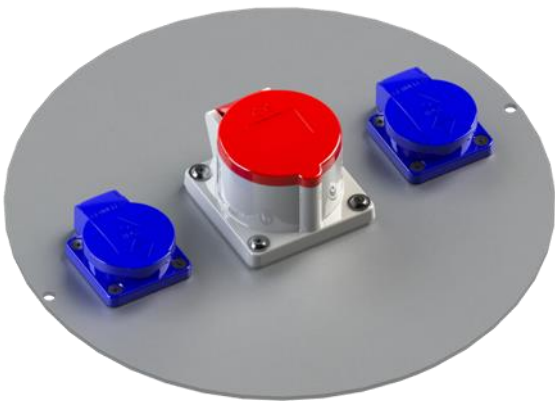
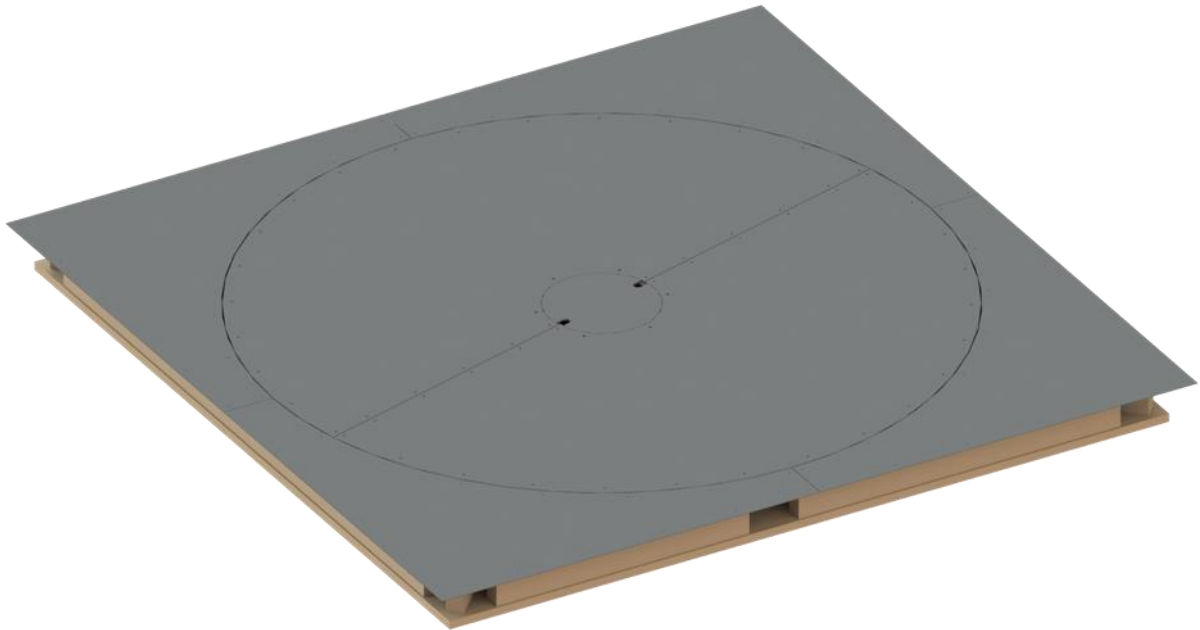
| | |
|--|--|
| Diameter | 2.0 m |
| Load capability | 1000 kg |
| Point Load | 250kg (at area of 10 cm x 10 cm) |
| Height | 130 mm |
| Material cover plate | Stainless steel |
| Rotating speed adjustable | 0.1 rpm – 2.5 rpm |
| Positioning accuracy | +/- 0.5° |
| Rotating angle | -200° to 400° |
| Motor | Synchronous servo motor |
| Turntable drive | Toothed belt drive, worm gear |
| Concentricity tolerance | +/- 3 mm |
| Elevation tolerance | < 5 mm |
| Ground plane connecting | every 50 mm |
| Square border interface (easy fitting into ground plane of chamber) | 2.3 m x 2.3 m |
| Voltage | 110 VAC – 230 VAC; 50 Hz / 60 Hz; single phase |
| Current consumption | max. 16 A |
| Required RCD | 300 mA |
| Control cable | Fiber optic lines |
| Remote control via | LAN (TCP/IP); (IEEE only with NCD) |
| Interference suppression | 20 dB under limits DIN EN 55011:2022-05 class B |
| Temperature working range | 10°C – 35°C |
| Total weight | approx. 340 kg |
| Accessories | Service manual 3 m power supply cable |

Brief description

The turntable **TT 2.0 SI** is especially designed for flush mounted installation in semi anechoic electromagnetic absorption chambers. The carrier plate is made of stainless steel.

A 285 mm diameter opening in the center of the turntable provides the capability to insert power supply for testing.

The **LAN (TCP/IP) - interface** provides an additional control option for all functions, when operated with the **FCU^{3.0}** or **NCD Controller**



Standard center plate



Example for a customized center plate

Information presented enclosed is subject to change as product enhancements are made regularly. Pictures included are for illustration purposes only and do not represent all possible configurations.